



## ExpertBook B9 OLED | B9403CVAR

The world's lightest 14" OLED business laptop for C-suite executives <sup>1</sup>

Designed with premium magnesium-lithium alloy, ExpertBook B9 OLED pushes the limits of lightness for ultimate portability and durability. With an environmentally-friendly design, brilliant 16:10 OLED display and smart dual cooling fans, it is the perfect partner for executives and business travelers, upping green credentials and professionalism — and setting a new benchmark for elite business laptops.



Ultralight from  
990g



16:10 3K OLED  
display



Microsoft Copilot



Sustainable  
technology



Up to Intel® Core™  
7 processors  
(Series 1)



US military  
grade durability

### The perfect balance of lightweight, durability and craftsmanship

- Ultralight, all-metal device from 990g
- Expertly crafted with premium magnesium-lithium alloy
- Tested to US military grade MIL-STD-810H standards
- Fast charging battery up to 60% capacity in 45 minutes

### Sustaining an incredible future, for your business and the planet

- Chassis created using Thixomolding patented technology to reduce 29% e-waste and 75% production time
- Made with up to 70% post-industrial recycled metal and FSC™-certified (FSC Mix) packaging
- Backed by ASUS Carbon Partner Services

### Enterprise-grade security to safeguard critical business data

- Multilayer security and remote management with Intel vPro® Essential
- Multifactor authentication via IR camera, fingerprint sensor and NFC login

### The best device for the modern workplace

- Up to Intel® Core™ 7 processor 150U
- Up to 64GB LPDDR5x memory and 2TB M.2 PCIe® 4.0 SSD
- 16:10 WQXGA+ OLED display
- Dual fans with auto dust removal
- AI-powered video conferencing with ASUS AI noise-canceling and ASUS AI camera

## Warranty and Support<sup>2</sup>



3-year global warranty  
100% free of charge, with no hidden costs.



Pick up & return service  
Enjoy door-to-door pick up, repair, and returns.



MyASUS  
Contact customer service, view repair status, read product guides and more.

# SPECIFICATIONS



| Model                      | ExpertBook B9 OLED (B9403CVAR)   |
|----------------------------|--|
| Operating System           | Windows 11 Pro/Windows 11 Home   |
| Processor                  | Intel® Core™ 7 processor 150U (12M cache, up to 5.4 GHz, 10 cores) (vPro® Essential)<br>Intel® Core™ 5 processor 120U (12M cache, up to 5.0 GHz, 10 cores) (vPro® Essential)<br>Intel® Core™ 7 processor 150U (12M cache, up to 5.4 GHz, 10 cores)<br>Intel® Core™ 5 processor 120U (12M cache, up to 5.0 GHz, 10 cores) |
| Graphics                   | Intel® Graphics  |
| Memory                     | Up to 64GB LPDDR5x 7500MHz (CPU support up to 5200MHz)<br>Onboard: 16GB/32GB/64GB LPDDR5x 7500MHz  |
| SSD                        | 1 x M.2 SSD, up to 2TB PCIe® 4.0 SSD<br>512GB/1TB M.2 PCIe® 4.0 Value SSD<br>512GB/1TB/2TB M.2 PCIe® 4.0 Performance SSD   |
| Display                    | 14.0" 3K OLED (2880*1800), 16:10, wide view, glare, 400 nits, 100% sRGB, 100% DCI-P3   |
| I/O Ports                  | 2 x Thunderbolt™ 4.0 USB-C<br>1 x USB 3.2 Gen 2 Type-A<br>1 x HDMI 2.1 (TMDS)<br>1 x Micro HDMI transfer to RJ45<br>1 x 3.5mm combo audio jack<br>1 x Kensington Nano Security Slot™   |
| Camera                     | 1080p FHD IR camera, webcam shield   |
| Wireless                   | Wireless on board<br>Wi-Fi 6E (802.11ax) (Dual band) 2*2 + Bluetooth® 5.3 Wireless Card  |
| Audio                      | 2 x speaker<br>3 x multi-array microphone with Intelligo beam forming<br>ASUS AI Noise-Canceling Technology<br>Smart amp technology<br>Dolby Atmos certified   |
| LAN                        | Intel Ethernet Connection I219-LM 10/100/1000(vPro)<br>Intel Ethernet Connection I219-V 10/100/1000(non-vPro)  |
| Weight                     | From 990g (63Wh battery)   |
| Dimension                  | 31.1 x 21.5 x 1.578-1.699 cm   |
| AC Adapter                 | 65W non-Wall mount Type C power jack, Input : 100~240V AC, 50/60Hz universal   |
| Battery                    | 63 Wh, 3-cell, Li-polymer  |
| Keyboard & Touchpad        | Full-size keyboard with 1.5 mm key travel, backlit, spill-resistant  |
| NumberPad                  | Yes  |
| Security                   | Kensington Nano Security Slot™, webcam shield, fingerprint sensor, NFC login, IR camera, TPM 2.0 (optional)  |
| Manageability Certificates | ASUS Control Center (sold separately), ASUS Business Manager, MyASUS<br>MIL-STD-810H, TÜV Rheinland  |
| Sustainability             | EPEAT Gold+, TCO 9.0, Energy Star 8.0, FSC Mix, WEEE, French Repairability Index, RoHS<br>PIR 60% (A/C part: 70%, D part: 20%)   |

DISCLAIMER:  
1. WEIGHT MAY VARY ACCORDING TO CONFIGURATION.  
2. ASUS EXPERT SERIES SERVICE PACKAGE MAY DIFFER FROM COUNTRY TO COUNTRY. WE RECOMMEND THAT YOU CHECK WITH YOUR LOCAL DEALERS FOR THE SPECIFICATIONS OF THE PRODUCTS AVAILABLE IN YOUR COUNTRY.

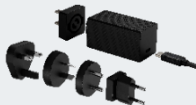
## Recommended Accessories



ASUS SimPro Dock 2



ZenScreen MB165B



65W USB-C Ultra Mini  
Universal Adapter